



Installation Guide

SSD Upgrade Kit for Mac

JetDrive™ 825/820

(Version 1.0)

CAUTION!

Please take the following electrostatic discharge (ESD) precautions during installation:

1. Work on a static-free surface
2. Wear an anti-static wrist strap

Step 1



Use Disk Utility or set up Time Machine® to back up your Mac® to an external storage device or to the JetDrive 825 portable SSD.

*Please refer to the Apple website for more information.

Step 2



Use the T5 screwdriver to remove all the screws on the back cover of the enclosure.

Step 3



Open the back cover of the enclosure.

Step 4



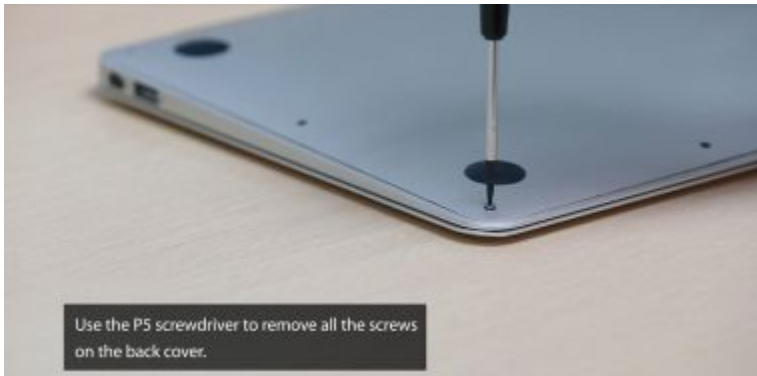
Use the T5 screwdriver to remove the screw holding the JetDrive SSD.

Step 5



Take out the JetDrive SSD.

Step 6



Use the P5 screwdriver to remove all the screws on the back cover.

Step 7



Disconnect the battery.

Step 8



Use the T5 screwdriver to remove the screw holding the SSD.

Step 9



Take out the original SSD.

Step 10



Insert the JetDrive SSD.

Step 11



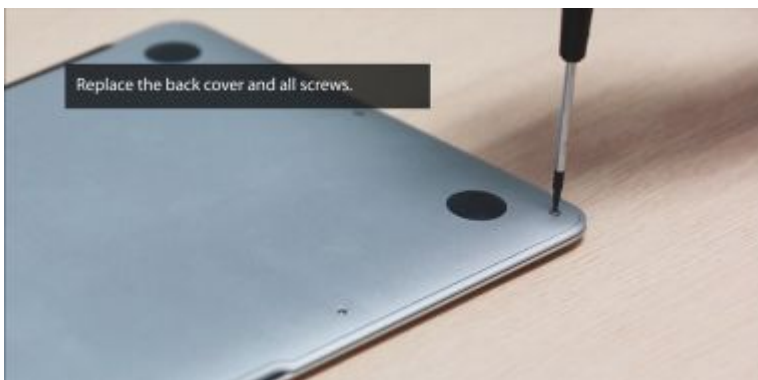
Replace the screw.

Step 12



Reconnect the battery.

Step 13



Replace the back cover and all screws.

Step 14



Hold the "Command+R" keys during startup to enter Disk Utility.

Step 15



Restore your Mac from the external hard drive that contains a backup of your Mac.

*You may skip this step if you use the JetDrive 825 to back up your Mac.